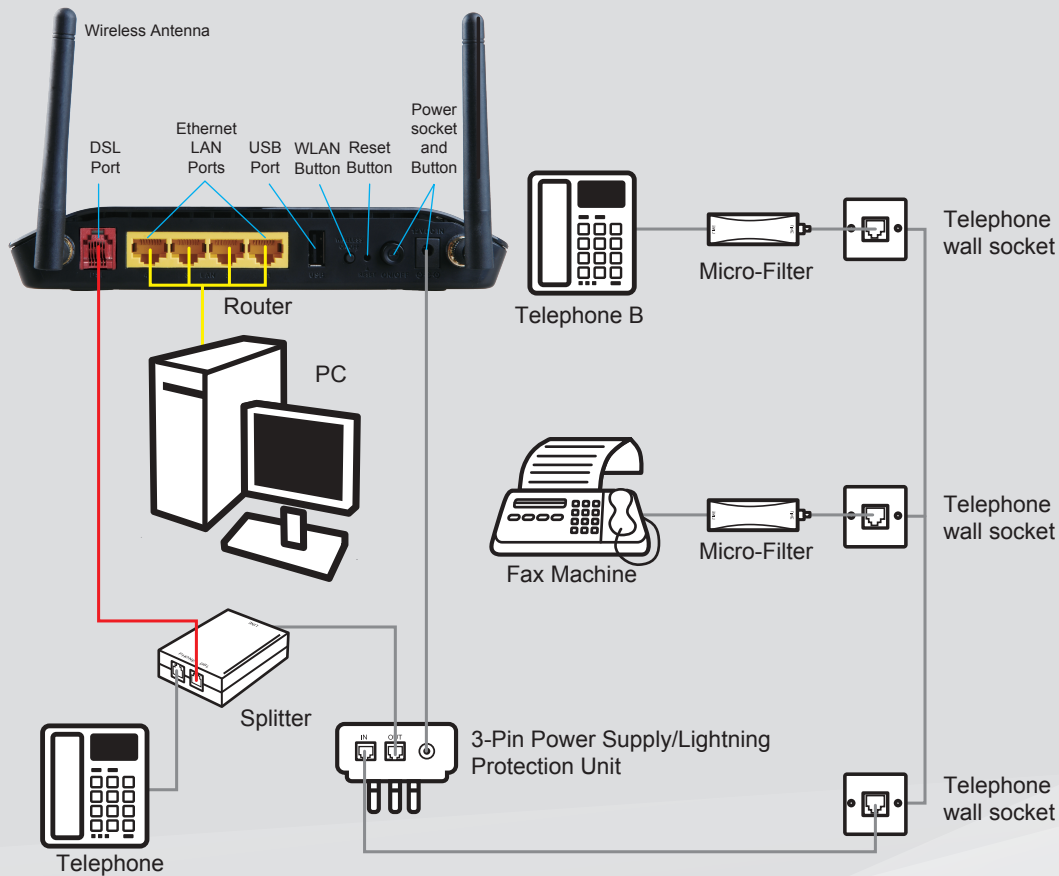


## Installation Overview



## Product Support and Contact Information

A Diagnostic Utility is provided, to assist, in the event of a problem arising. The help screens will suggest the appropriate course of action to resolve the issue.

If the Diagnostic Utility is unable to resolve the issue please contact either the ADSL support line or Router support line - please see contact details and operating hours below.

Note that the support person will, as a first step, request the outcome of running the Diagnostic Utility – Please ensure this has been done and the resulting information is available, prior to making the support call.

ADSL support:

Telephone: 10210

Operating hours: Mon – Fri / 06h00 – 21h00, Weekends / 06h00 – 20h00

Router support

Website: [www.d-link.co.za/DSL-2750U-TK](http://www.d-link.co.za/DSL-2750U-TK)

### Note:

The Router and Power Supply/Lightning Protection Units are not themselves guaranteed against lightning or power surges.

The default IP address of the Router webpage is 10.0.0.2

The default administration username is “admin” and the password is “admin”.

It is a security risk to leave your administration password as default – we strongly recommend you to change it.

This Quick Start Guide only applies to users running Windows Vista, Windows XP, Windows 2000 and Windows 7 operating systems.

If using a non Microsoft Windows operating system, please refer to User Manual on CD for assistance in installing.

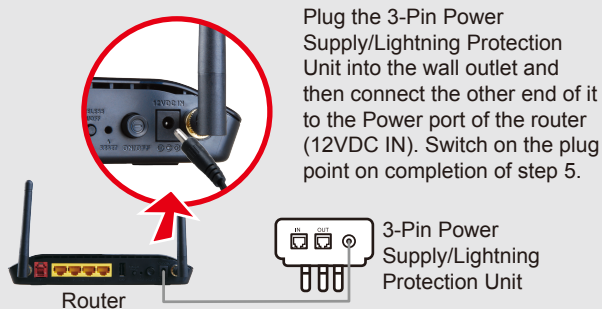
We recommend strongly that the user changes the default Wireless Network ID and the default Wireless Security Key.

The software for the DSL-2750U makes provision for the use of WPA as the security key.

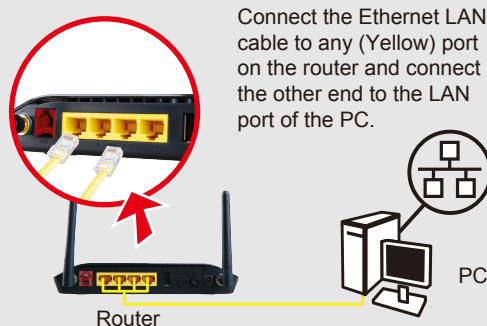
## 1 This pack contains



## 2 Power Adapter Connection

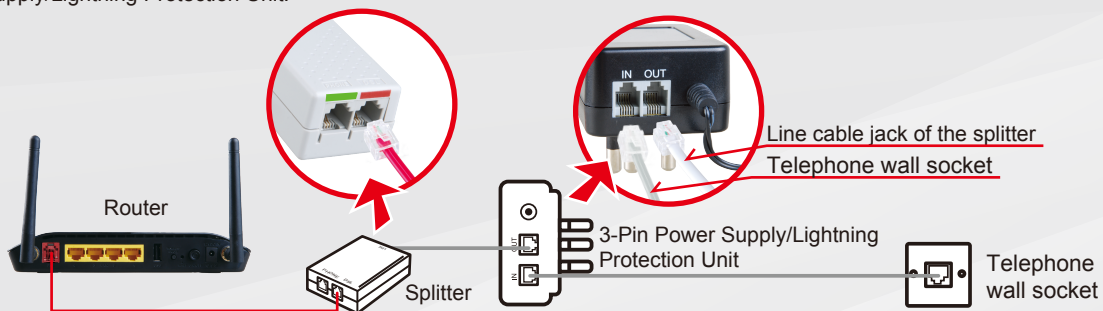


## 3 LAN Connection



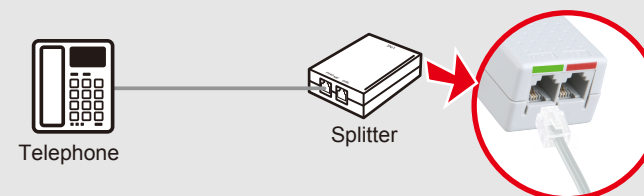
## 4 DSL Port Connection

Connect the (DSL) port of the Router, using the (Red) telephone cable, to the port marked (Red, DSL) on the splitter. Connect the short (Line) cable attached to the splitter, to the port marked out (OUT) on the Power Supply/Lightning Protection Unit. Connect the telephone wall socket, using the (Grey) telephone cable, to the port marked (IN) on the Power Supply/Lightning Protection Unit.



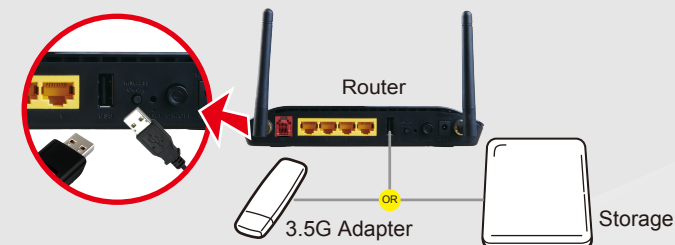
## 5 Telephone Set Connection

Connect the telephone set to the splitter port marked (Green, PHONE), using the cable supplied with the telephone.



## 6 USB Connection

Optionally, a wireless Internet connection is available using a 3G USB dongle (not supplied). Storage devices may also be attached via the USB port.



## 7 CD Installation

Insert the CD into the CD drive of your computer, the installation CD will autostart, follow the on screen instructions to configure the Router.



**NOTE:** Should the installation CD not start automatically please run the setup program from your CD ROM.

### Note:

If a second phone is connected, an additional filter (supplied) should be fitted as shown, to minimise any interference between voice and data. All wall sockets require a filter. Additional filters can be purchased from a Telkom Direct Shop.

