

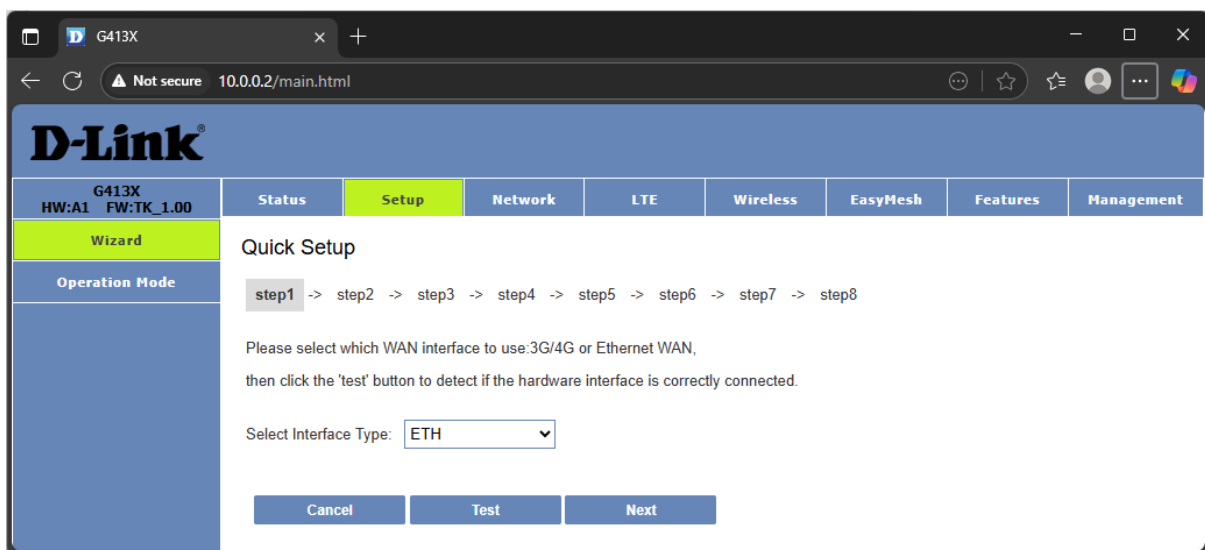
[Basic Manual Setup for G413X- Basic Wizard Setup for PPPoE Fibre]

Before you start: Please make sure the router is connected as per the Quick Installation Guide (QIG) for Fibre service.

- 1) On a device that is connected to the router (preferably with a cable on a pc/laptop or Wi-Fi on a phone is fine but please make sure your mobile data is off).

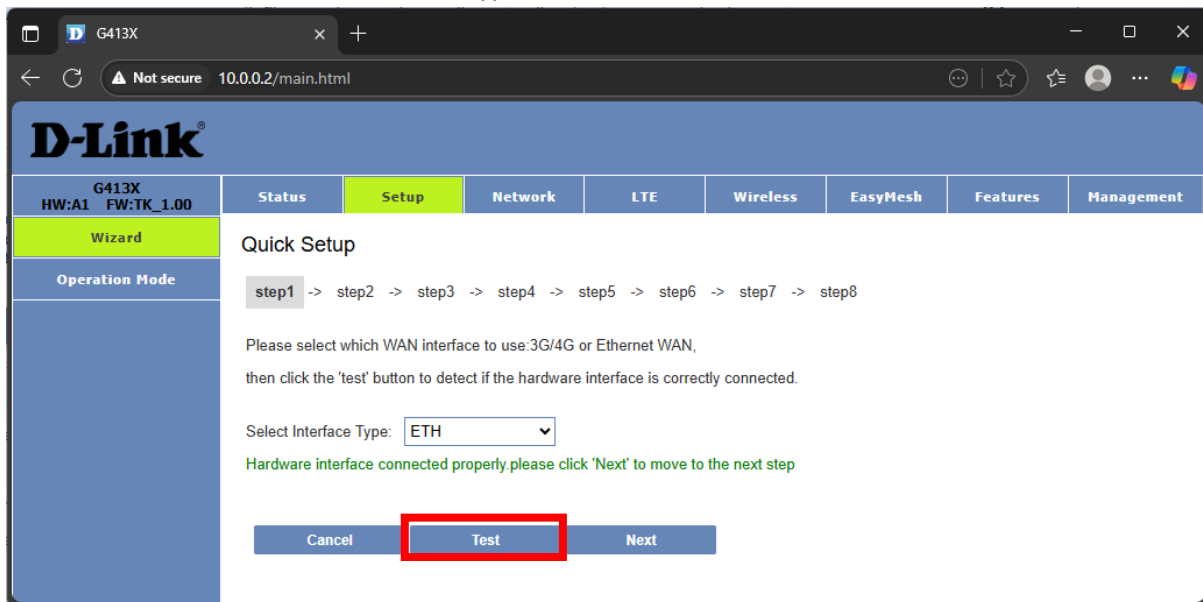
Note: this config is best done with a LAN cable.

- 2) Open a web Browser (internet explorer/google chrome/Firefox) input the IP address of your router (default is 10.0.0.2 unless it was changed), we will use Microsoft Edge in this example.

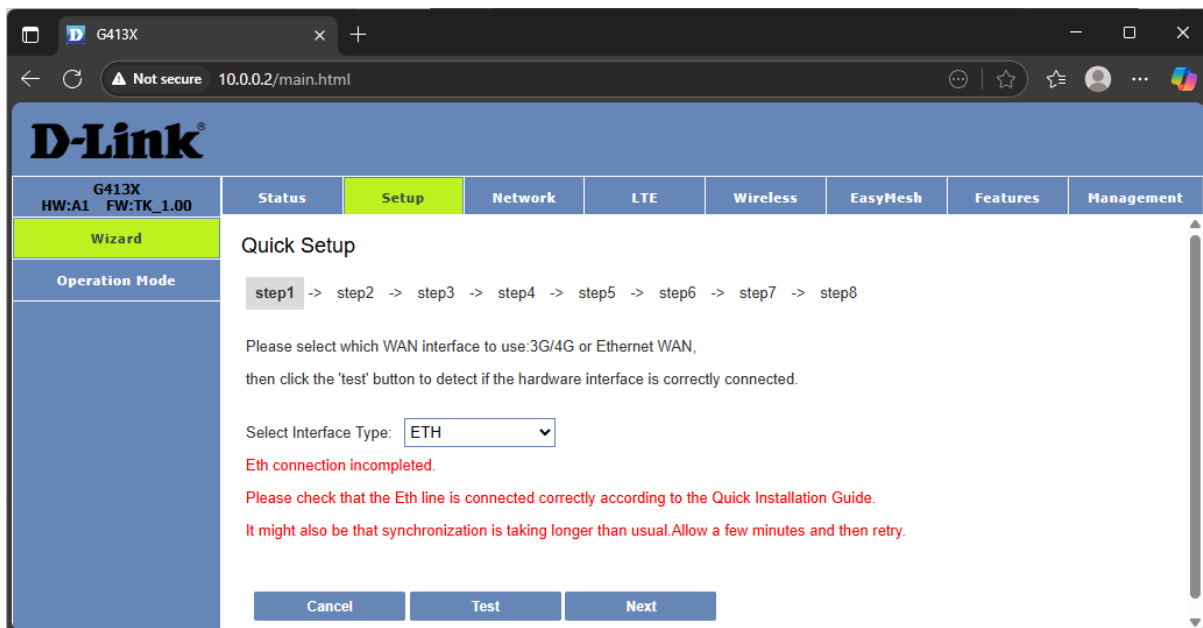


3) Click on [Test] as per the instructions.

Note: Make sure the interface type is selected to ETH



a. If it passes, it will show Hardware interface connect properly.



b. If it fails, it will show ETH connection incomplete, please check the cable is connected properly and try again

4) Click on [Next] as per the instructions

D-Link®

G413X
HW:A1 FW:TK_1.00

Status Setup Network LTE Wireless EasyMesh Features Management

Wizard

Operation Mode

Quick Setup

step1 -> step2 -> step3 -> step4 -> step5 -> step6 -> step7 -> step8

Please select which WAN interface to use: 3G/4G or Ethernet WAN,
then click the 'test' button to detect if the hardware interface is correctly connected.

Select Interface Type:

Hardware interface connected properly. please click 'Next' to move to the next step

Cancel Test Next

5) System will Auto detect, please select the one that passed and click on [Next]

D-Link®

G413X
HW:A1 FW:TK_1.00

Status Setup Network LTE Wireless EasyMesh Features Management

Wizard

Operation Mode

Quick Setup

step1 -> step2 -> step3 -> step4 -> step5 -> step6 -> step7 -> step8

Auto detect success: PPP account test passed. Suggest you choose PPPoE, Please click 'Next'.

Select Mode:

Back Reset Next

- If both DHCP and PPPoE test failed, it means that your FIBRE service is not activated. Please contact the provider of your FIBRE to activate it.

- 6) Input your Username and Password as provided by your ISP (Internet Service Provider).
Note: This is not Username: admin & Password: admin per the info sticker on the router.

D-Link®								
G413X HW:A1 FW:TK_1.00	Status	Setup	Network	LTE	Wireless	EasyMesh	Features	Management
Wizard	Quick Setup							
Operation Mode	step1 -> step2 -> step3 -> step4 -> step5 -> step6 -> step7 -> step8 Please enter your Username and Password as provided by your ISP (Internet Service Provider). Click 'Next' to continue. Username: <input type="text" value="xxx@telkomsa.net"/> Password: <input type="password" value="....."/> Confirm Password: <input type="password" value="....."/> <div> <input type="button" value="Back"/> <input type="button" value="Next"/> </div>							

- 7) Please wait patiently while the router checks if your account is valid or not.

D-Link®								
G413X HW:A1 FW:TK_1.00	Status	Setup	Network	LTE	Wireless	EasyMesh	Features	Management
Wizard	Quick Setup							
Operation Mode	step1 -> step2 -> step3 -> step4 -> step5 -> step6 -> step7 -> step8 The configured account is valid, please click 'Next' to the next step. <div> <input type="button" value="Back"/> <input type="button" value="Next"/> </div>							

- a. If your account is input correctly and is valid. Please click [Next]

D-Link®								
G413X HW:A1 FW:TK_1.00	Status	Setup	Network	LTE	Wireless	EasyMesh	Features	Management
Wizard	Quick Setup							
Operation Mode	step1 -> step2 -> step3 -> step4 -> step5 -> step6 -> step7 -> step8 The configured account is invalid. Please remember that the password is case sensitive. Please click the 'Back' button to re-enter the username and password. If the problem persists, please contact your ISP. <div> <input type="button" value="Back"/> </div>							

- b. If your account is not valid or there may be a typo.
 Please click [Back] and confirm your username and password again.
 If this steps still shows your account is not valid. Please contact your ISP to find out more info.

- 8) Update your 2.4G and 5.8G Wi-Fi name and password.
 - a. SSID is the Wi-Fi name that you will connect to
 - b. WPA Pre-share key is the Wi-Fi password of the corresponding Wi-Fi

D-Link®

G413X
HW:A1 FW:TK_1.00

Status Setup Network LTE Wireless EasyMesh Features Management

Wizard

Operation Mode

Quick Setup

step1 -> step2 -> step3 -> step4 -> **step5** -> step6 -> step7 -> step8

SSID 2.4GHz:

2.4G WPA Preshare key:

SSID 5GHz:

5G WPA Preshare key:

←Wi-Fi Password you like

←Wi-Fi Password you like

Back Skip Next

- 9) Change the login password that you will use next time you try to access the router's interface.

D-Link®

G413X
HW:A1 FW:TK_1.00

Status Setup Network LTE Wireless EasyMesh Features Management

Wizard

Operation Mode

Quick Setup

step1 -> step2 -> step3 -> step4 -> step5 -> **step6** -> step7 -> step8

Use the fields below to enter up to 15 characters and click "Apply" to change or create passwords.

Note: Password cannot contain a space.

AdminName:

AdminPassword:

Confirm AdminPassword:

←Login Password you like

←Same Password again

Back Skip Next

10) If you have Telkom VPN Lite service. Please input the info as provided by Telkom.

If you do not have a Telkom VPN Lite Service, or do not know what this is, please click [Skip]

D-Link®								
G413X HW:A1 FW:TK_1.00	Status	Setup	Network	LTE	Wireless	EasyMesh	Features	Management
Wizard								
Operation Mode								
<p>Quick Setup</p> <p>step1 -> step2 -> step3 -> step4 -> step5 -> step6 -> step7 -> step8</p> <p>If you are a Telkom VPN Lite Customer, you can configure it here. Your PC's IP address needs to renew after the wizard is done - please disconnect your PC and then reconnect it.</p> <p>If you're not a Telkom VPN Lite customer you can click "Skip" to continue.</p> <p>Site Username: <input type="text"/></p> <p>Site Password: <input type="password"/></p> <p>Confirm Site Password: <input type="password"/></p> <p>Site LAN IP/Netmask: <input type="text"/> (Format: A.A.A.A/B(A:0-255,B:1-32))</p> <p> <input type="button" value="Back"/> <input type="button" value="Skip"/> <input type="button" value="Next"/> </p>								

11) This is the summary page that will show you all the settings that will be changed. Please take a photo or screen shot for future reference and click on [Apply]

D-Link®								
G413X HW:A1 FW:TK_1.00	Status	Setup	Network	LTE	Wireless	EasyMesh	Features	Management
Wizard								
Operation Mode								
<p>Quick Setup</p> <p>step1 -> step2 -> step3 -> step4 -> step5 -> step6 -> step7 -> step8</p> <p>Setup complete.</p> <p>Click "Back" to review or modify settings.</p> <p>Click "Apply" to apply the current settings.</p> <p>If your Internet connection does not work after you pressed apply, you can try the Setup Wizard again with alternative settings or use Manual Setup instead if you have your Internet connection details as provided by your ISP.</p> <p> Site Username: <input type="text"/> Site Password: <input type="password"/> Site LAN IP/Netmask: <input type="text"/> / Web Login Name: <input type="text"/> admin Web Login Password: <input type="password"/> admin1 SSID 2.4GHz: <input type="text"/> 2.4G Name you like 2.4G WPA Preshare key: <input type="text"/> Passwordyoulike SSID 5GHz: <input type="text"/> 5.8G Name you like 5G WPA Preshare key: <input type="text"/> Passwordyoulike </p> <p> <input type="button" value="Back"/> <input type="button" value="Apply"/> </p>								